



البحر الأحمر الدولية
Red Sea Global

Red Sea Global is a closed joint-stock company wholly owned by the public investment fund (PIF) of Saudi Arabia

It is a vertically integrated real estate developed with a diverse portfolio across tourism, residential, experiences, infrastructure, transport, healthcare, and services.

This includes the luxury regenerative tourism destinations The Red Sea, which began welcoming guests in 2023.

RSG was born out of vision 2030 a cornerstone of Saudi Arabia's ambition to diversify its economy.

Across its growing portfolio of destinations, subsidiaries and businesses, RSG seeks to lead the world towards a more sustainable future, showing how responsible development can uplift communities, drive economies, and enhance the environment.

The Red Sea Projects and AMAALA are the world's most ambitious tourism and hospitality projects

Both projects, born out of Vision 2030, will position Saudi Arabia on the global tourism map



Setting new standards in regenerative development



Two exquisite luxury destinations created around one of the world's last hidden natural treasures



Positioning Saudi Arabia on the global tourism map

Strategically
Located

Both projects are strategically located
at the crossroads of Europe, Asia, the
Middle East and Africa

Project Attributes



(KM2) Total Area	28,000	4,200
Proximity to Jeddah (KM)	~500	~700
Coastline Length (KM)	~200	~100

Destination Attributes



Eight-hour flight for 85% of
the world's population



Only year-round resort
destinations in the GCC



250 Million people
within **3 hours**



Dedicated international airports
for each project will ensure
connectivity to major hubs and
global source markets



Year-round destination, with moderate
weather and average of 32 Celsius in
summer and little to no precipitation

THE RED SEA
البحر الأحمر



Pioneering Sustainability Standards

Both projects will set new standards for regenerative development, pioneering a new partnership between luxury tourism and the natural environment, to achieve a better tomorrow

Leader in regenerative development to *preserve, protect and enhance* the environment



Free of single-use plastics



%100 from renewable energy



Carbon-neutral

30%

%30 net positive conservation benefit



Zero waste to landfill



LEED Platinum Building standards



Creating socio-economic benefits & employment opportunities



Total Jobs¹

70,000

50,000



GDP Contribution
(During Construction)

27B USD~

35B USD~



GDP Contribution
(Steady State)

6B USD~

2B USD~

170

Students

Hospitality
Scholarships

1,600

Students

Vocational
Training

254

Students

Elite program (on job training)

We have installed

760,500
Solar Panels

One of the world's
largest battery storage
facilities at 1,300MWh



Investment Strategy

Program Highlights



Hospitality

Hyper Luxury
Luxury
Premium



Residential

Branded & Unbranded
Condo/Rental Program



Experiential

Food & Beverage
Luxury Retail
Wellness
Culture



Infrastructure

Airport
Mobility
Utilities
Civil Infrastructure

Developer

Red Sea Global

RSG or Third Party

Investment Strategy

Wholly-owned or in joint Venture
Partnerships

PPP/DBOT

Largest Saudi Riyal Denominated Green Loan
Accredited by HSBC as Green Loan Coordinator & DNV-GL



Red Sea Phase I
SAR 14.5 Billion
\$ 3.9 Billion



Jumeirah
HOTELS & RESORTS
STAY DIFFERENT™
GIB | جي آي بي كابيتال
SAR 1.4 Billion
\$ 370 Million



159 Keys

FOUR SEASONS
SAR 2 Billion
\$ 530 Million
بنك الرياض
Riyad Bank



180 Keys

Building Joint Ventures with the Private Sector

almutlag real estate investment
المطلق للاستثمار العقاري



Jumeirah
HOTELS & RESORTS
STAY DIFFERENT™



البحر الأحمر الدولية
Red Sea Global



SAR
2 Billion
\$530 M

159
Keys

50/50
Partnership

32
Residential properties



الملكة



FOUR SEASONS



البحر الأحمر الدولية
Red Sea Global



SAR
2.5 Billion
\$670 M

149
Keys

50/50
Partnership

31
Residential properties



Our Public-Private Partnerships with World Leaders in Renewable Energy

the concession and figures are for Phase 1 of both developments.



25

Years Utilities Concession



أمالا
AMAALA



25

Years Utilities Concession



340 MW_{ac}

Solar Power Generation

1,200 MWh

Battery Energy Storage System

50,000 m³/day

Sea Water Reverse Osmosis (Water Generation)

18,315 m³/day

Waste Water Generation & Treatment

14,500 m³

Treated Sewage Effluent for Irrigation

32,500 RT

District Cooling

30 Ton/Day

Municipal Solid Waste Treatment & Recycling

290 MW_p

Solar Power Generation

700 MWh

Battery Energy Storage System

37,000 m³/day

Sea Water Reverse Osmosis (Water Generation)

6,000 m³/day

Waste Water Generation & Treatment

4,800 m³/day

Treated Sewage Effluent for Irrigation

Saudi Airlines Catering Company (SACC) Concession Agreements for Catering & Laundry Facilities



Concession Terms

5B SAR

1.33B USD

Value of the concessions

20 Years

Term of the concessions

150,000

Meals produced by the facility each day

100+ Tons

Of laundry handled daily

TRSP Summary

By 2030, TRSP
Will Deliver Circa



5	02	16	2,725
ISLANDS	INLAND SITES	HOTELS	KEYS

10	03	~28	~5,000
ISLANDS	INLAND SITES	HOTELS	KEYS

22	06	~50	~8,000
ISLANDS	INLAND SITES	HOTELS	KEYS

The Red Sea Project Site

Phase 1



2,725
Keys

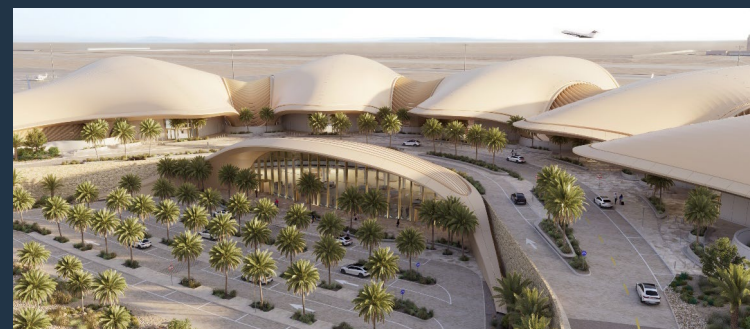
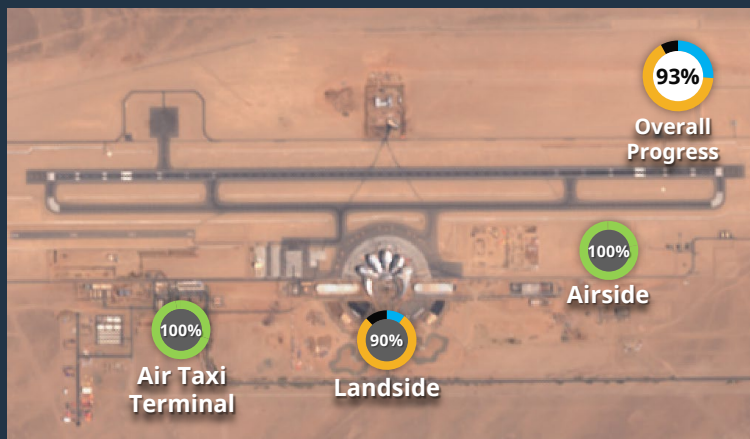
16
Hotels

Progress of Red Sea Phase 1 (as of February 2025)





مطار البحر الأحمر الدولي
Red Sea Int'l Airport



Aerial View



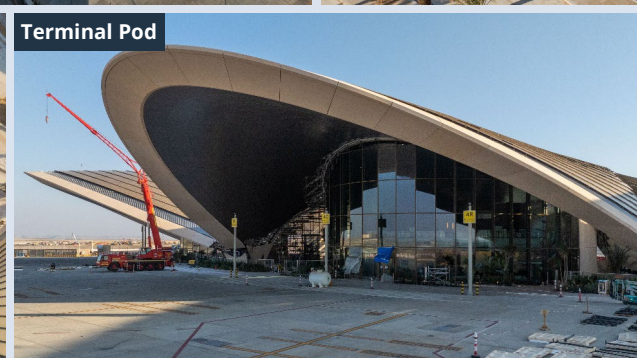
Arrival and Departure Area



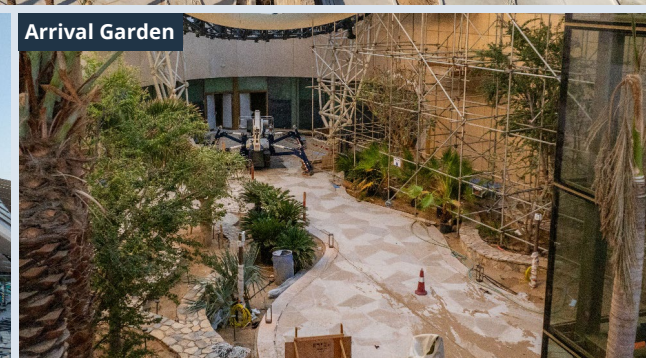
Terminal Pod Roof Detail



Terminal Pod



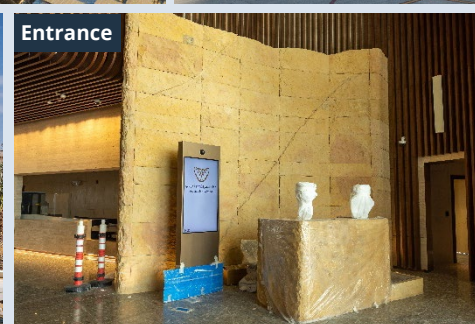
Arrival Garden



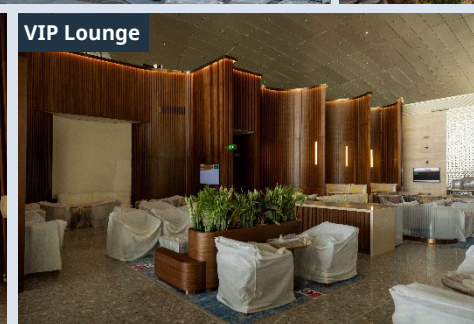
Departure Drop Off



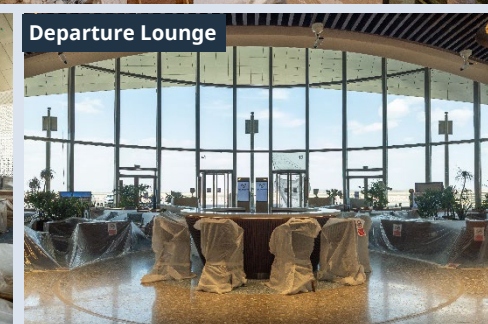
Entrance



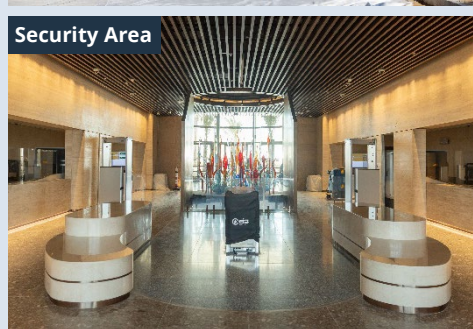
VIP Lounge



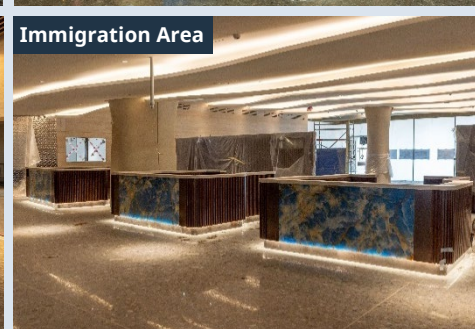
Departure Lounge



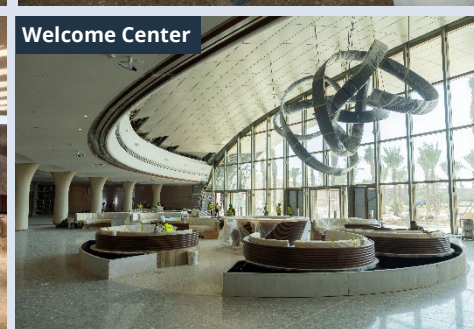
Security Area



Immigration Area



Welcome Center



Arrival Area





مطار البحر الأحمر الدولي
Red Sea Int'l Airport

THE RED SEA
البحر الأحمر

RUH

4 flights

Departure / Arrivals

JED

2 flights

Departure / Arrivals

DXB

2 flights

Departure / Arrivals

DMM

2 flights

Departure / Arrivals





SIX SENSES

SOUTHERN DUNES, THE RED SEA



ST. REGIS
RED SEA

OUR PROGRESS

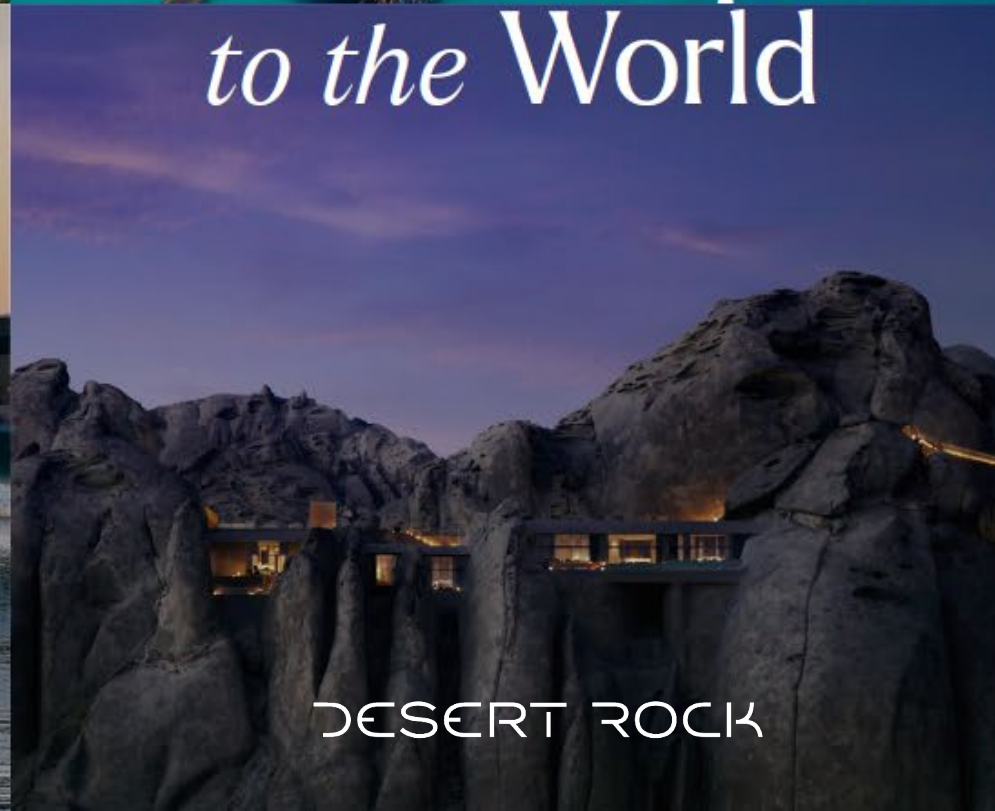
*Resorts are open
to the World*



Nujuma
نجومه
A RITZ-CARLTON RESERVE
ريتز - كارلتون ريزيرف



شيبارة
shebara
PRIVATE RESORT - منتجع خاص



DESERT ROCK



ثوب
THIWAL



OVERALL
PROGRESS



SIX SENSES
SOUTHERN DUNES, THE RED SEA

76
KEYS



SIX SENSES

Southern Dunes

HOTELIER

Breakthrough
Property of the
Year

GOLD KEY AWARDS

FOR EXCELLENCE IN HOSPITALITY DESIGN

- Best Guest
Room Luxury
- Best Suite



World's Best Spa
Design 2024

AHEAD

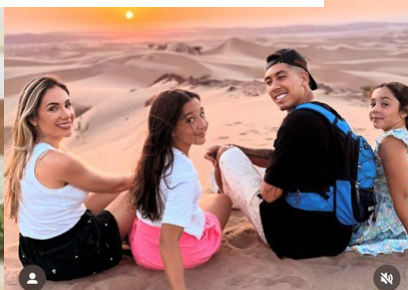
AWARDS FOR HOSPITALITY
EXPERIENCE AND DESIGN

- Hotel Suite of the Year
- Resort of the Year
- Hotel of the Year

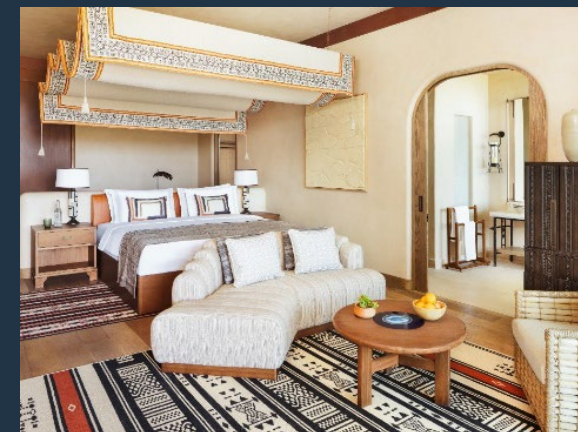


roberto_firmino What a unique experience in this incredible place @sixsensesoutherndunes

1/10



1st LEED
Platinum
Resort in KSA





OVERALL
PROGRESS



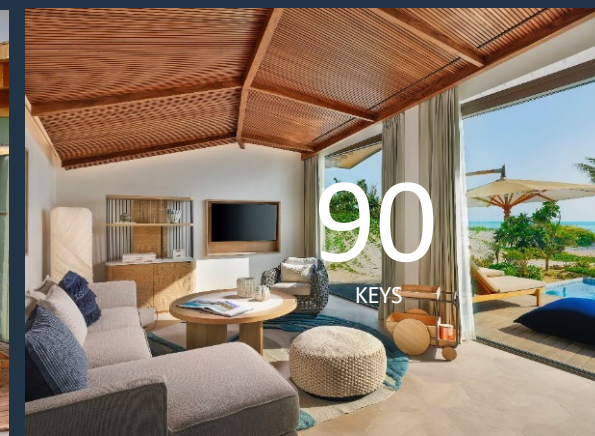
ST REGIS
RED SEA



Hosted Red Sea
Fashion Week



Ministry of Tourism
Chose The St. Regis
Red Sea Resort for
their Annual Retreat





OVERALL
PROGRESS

Nujuma
نجومه
A RITZ-CARLTON RESERVE
ريتز-كارلتون ريزرف

82
KEYS

JOINT INVESTOR

Nujuma

نجومه

A RITZ-CARLTON RESERVE
ريتز-كارلتون ريزيرف

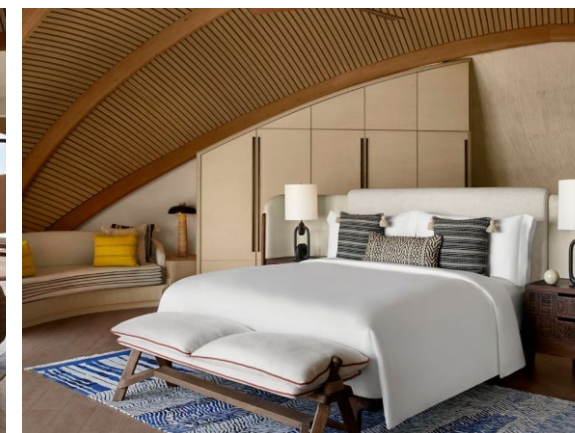
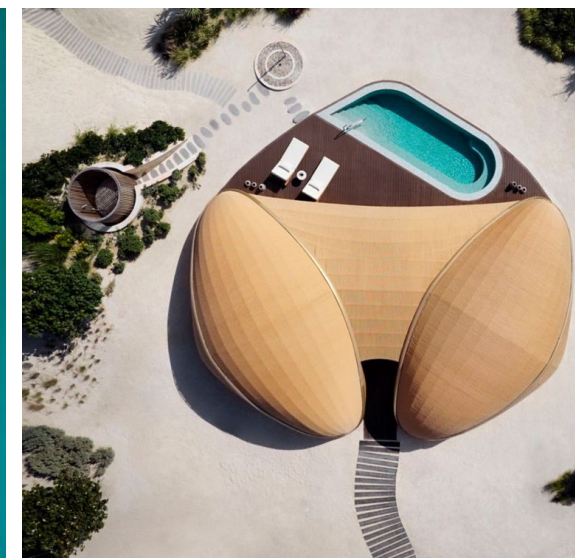
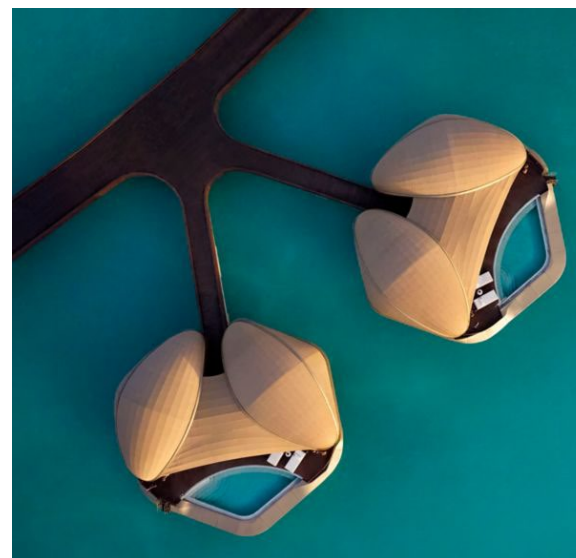
OVERALL
PROGRESS

Condé Nast
Traveler

Featured on the cover
of Conde Nast



World's Best Spa
Design 2024







OVERALL
PROGRESS

شعبارة
shebaro.

73
KEYS

شعبارة she'bara

RICHARD MILLE

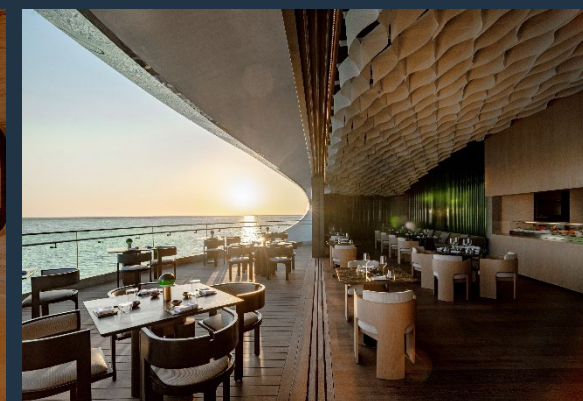
Hosted Richard
Mille's Rally A'Shira

COMMERCIAL
INTERIOR
DESIGN
Awards 2024

MENA

2024 for
Architectural
Project of the Year

Red Sea Global
Hospitality



Arrival Hub and Specialty Restaurant

شعبارة
she'bara

ARRIVAL HUB



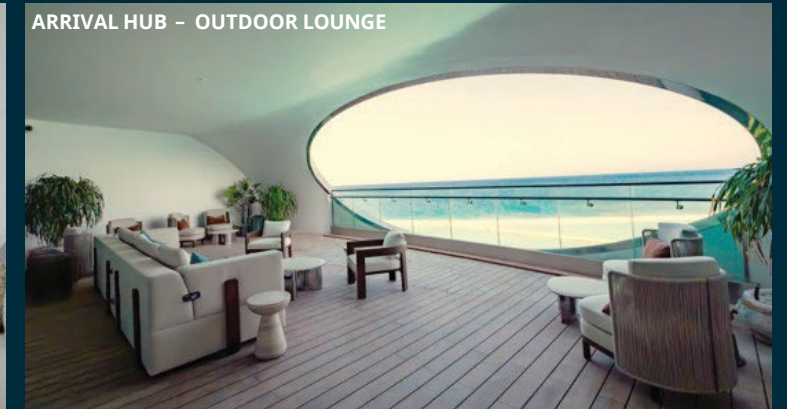
ARRIVAL HUB - GUEST LOUNGE AREA



ARRIVAL HUB - INDOOR LOUNGE



ARRIVAL HUB - OUTDOOR LOUNGE



SPECIALTY RESTAURANT (ARIA MARE)



Specialty Restaurant, Bar and Adult Pool

تنسيبارة
she'bara



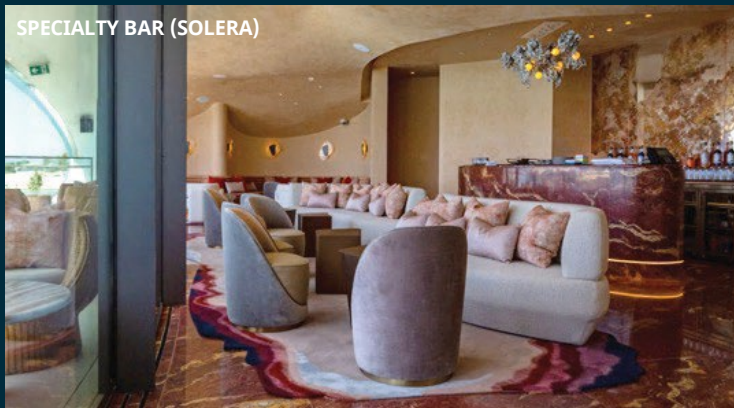
ADULT POOL



SPECIALTY RESTAURANT (IKI ROE)



SPECIALTY BAR (SOLERA)



Family Pool and All-Day Dining

تنسيبارة
shebora

FAMILY POOL AND ALL DAY DINING

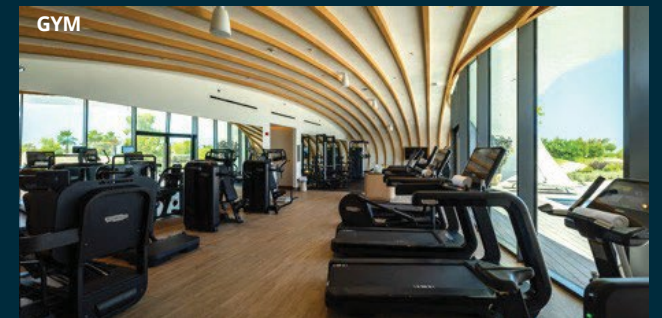
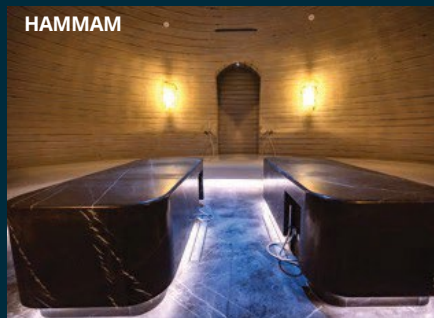
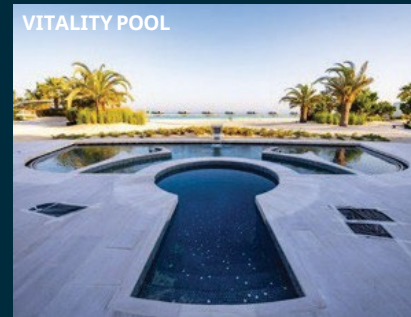
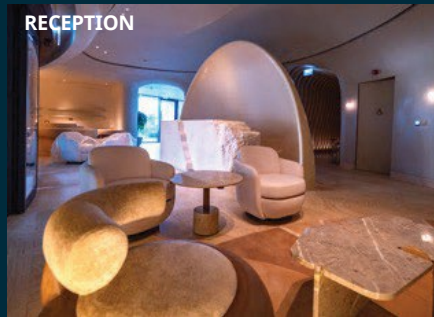


ALL DAY DINING



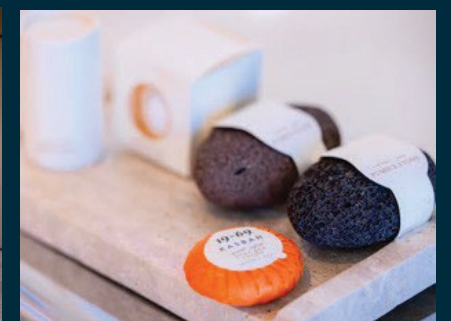
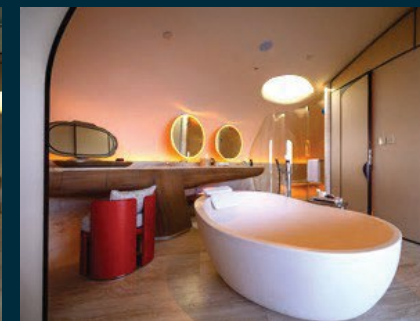
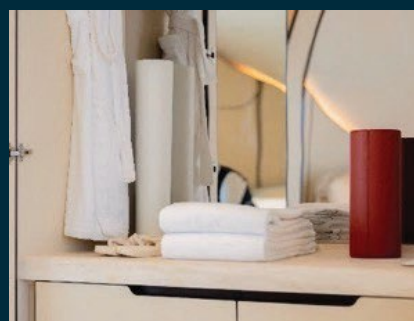
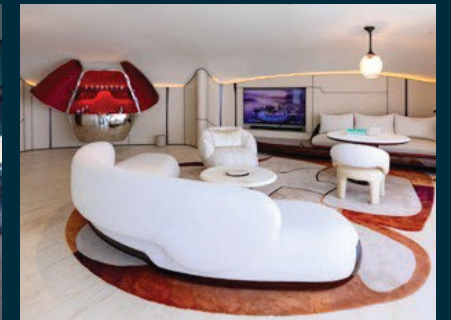
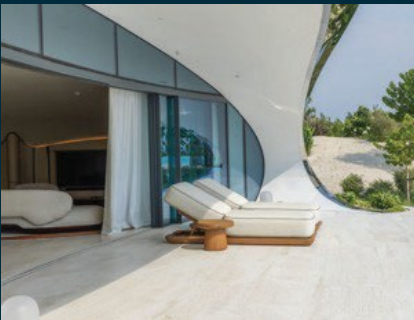
Spa and Gym

تنشيط
shebora



Beach and Overwater Villa

تتبيارة
shebora





OVERALL
PROGRESS

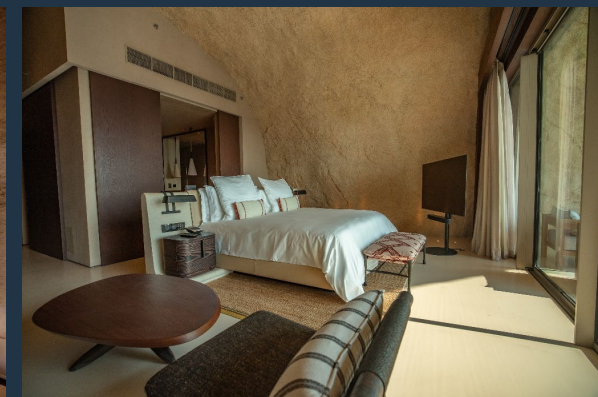
DESERT ROCK

64
KEYS

DESERT ROCK



Red Sea Global
Hospitality





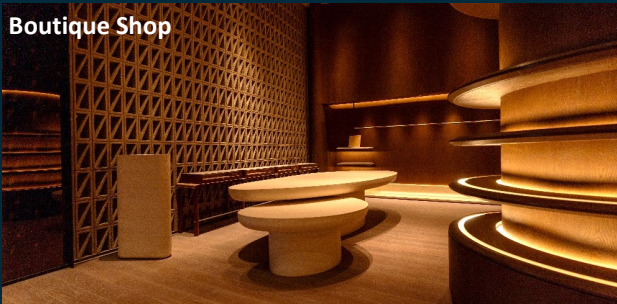
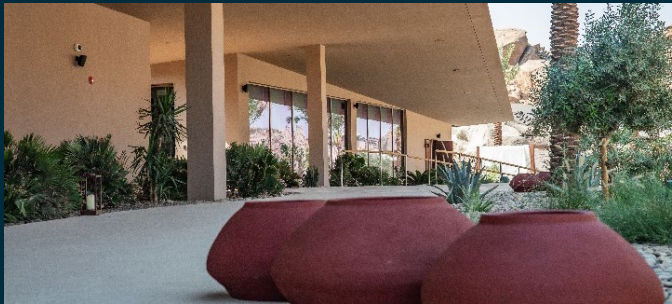
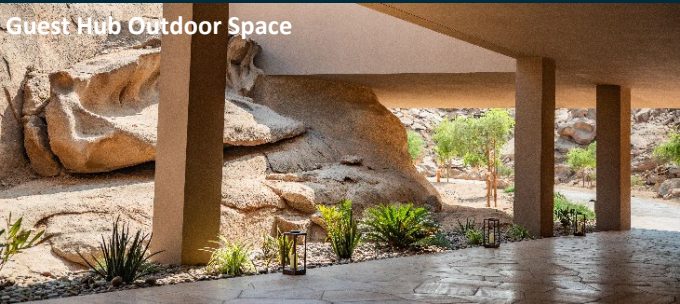
OVERALL
PROGRESS

DESERT ROCK

64
KEYS

Guest Hub

DESERT ROCK



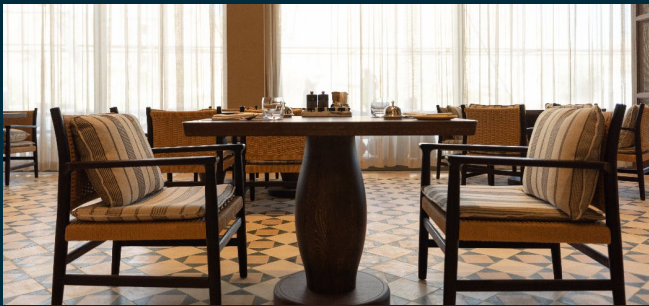
All Day Dining and Gym

DESERT ROCK

All Day Dining



Gym



Specialty Restaurant and Spa

DESERT ROCK

Specialty Restaurant



Indoor Dining



Outdoor Dining



Spa



Reception



Locker Room



Relaxation Room



Hammam



Treatment Room

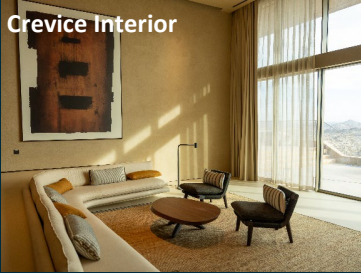


Vitality Pool



Crevice, Massif Piazza, Bridge and Destination Dining

DESERT ROCK



Hanging Valley and Wadi Villa

DESERT ROCK

Hanging Valley Villa



Wadi Villa



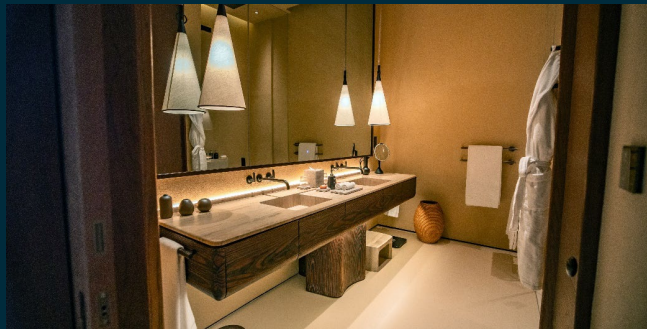
Cave Rooms

DESERT ROCK



Three Bedroom Wadi Villa

DESERT ROCK





OVERALL
PROGRESS

Beach Bar



Typical Villas



Main Villa

ثول
THUWAL



ROSEWOOD
HOTELS & RESORTS



RAFFLES
HOTELS & RESORTS

Jumeirah
HOTELS & RESORTS
STAY DIFFERENT™

Fairmont
HOTELS & RESORTS

GRAND
HYATT™

FAENA

EDITION

FOUR SEASONS



SLS
HOTEL & RESIDENCES



INTERCONTINENTAL
HOTELS & RESORTS

Golf Villas

Golf Clubhouse
Golf Course

MIRAVAIL

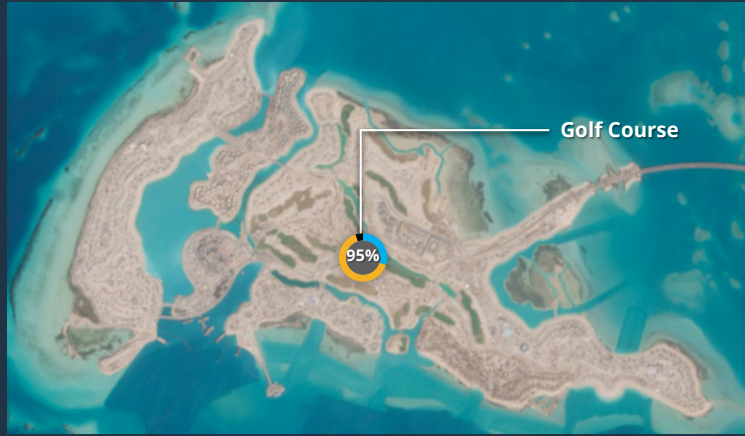


Overall
Progress

Shura Island
Shura Links
(Golf Clubhouse)



Shura Island
Shura Links
(Golf Course)



Golf Course Complete

18 Holes Grassed

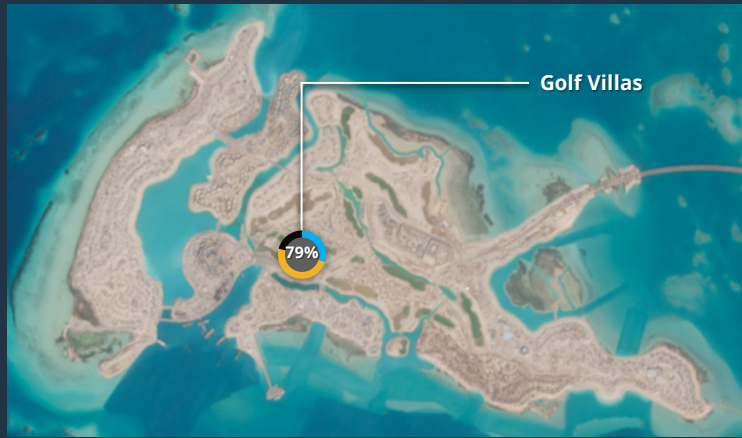
Aerial View



Shura Island



FOUR SEASONS Golf Villas



Number of Keys 75 villas

Dune Villas Aerial View



Dune Villa



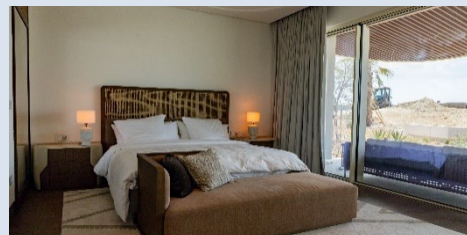
Dune Villa Entrance



Dune Villa Pool



Dune Villa Interior



Water Villas Aerial View



Water Villa



Water Villa Entrance



Water Villa Pool



Water Villa Interior



Shura Island
ROSEWOOD
 HOTELS & RESORTS



Number of Keys 187 keys



Shura Island



RAFFLES
HOTELS & RESORTS

Raffles
Hotels & Resort

57%



Number of Keys

168 keys

Aerial View



Arrival Hub



Specialty Restaurant and Arrival Area



Fitness Center



Spa



All Day Dining



Recreation Hub



Villa



Guestroom Clusters



Shura Island

Jumeirah
HOTELS & RESORTS



Number of Keys 159 keys

Aerial View



Arrival Lobby



Specialty Restaurant



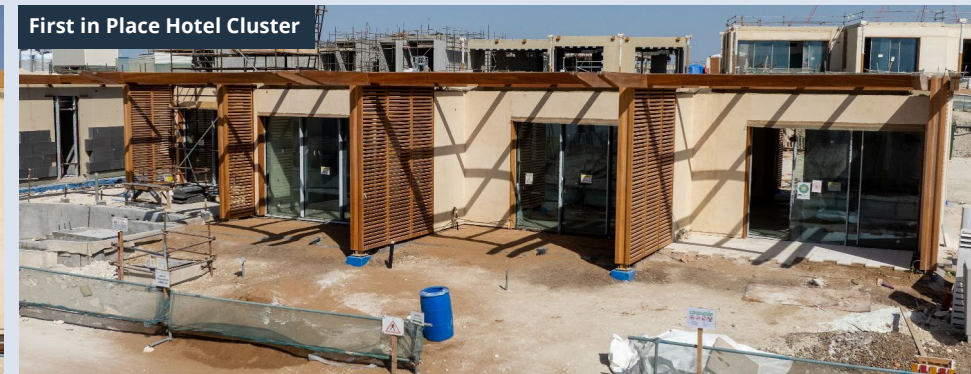
Spa



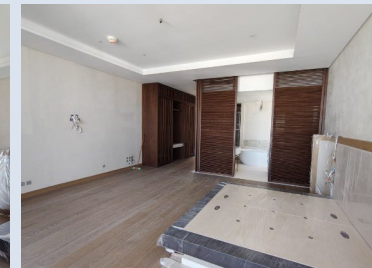
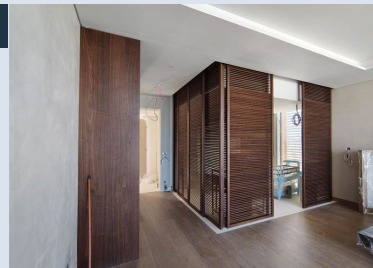
First in Place Villa



First in Place Hotel Cluster



First in Place Hotel Cluster Interior



Shura Island

Fairmont
HOTELS & RESORTS



Number of Keys 193 keys

Aerial View



Specialty Bar and Adult Pool



Spa



Specialty Restaurant



First in Place Hotel Cluster



First in Place Villa



Shura Island GRAND HYATT™



Number of Keys 430 keys

Mound



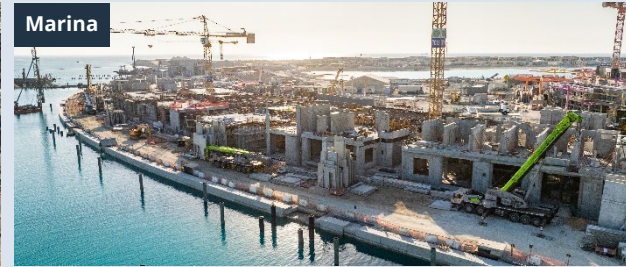
Mound Aerial View



Mound Piazza F&B



Marina



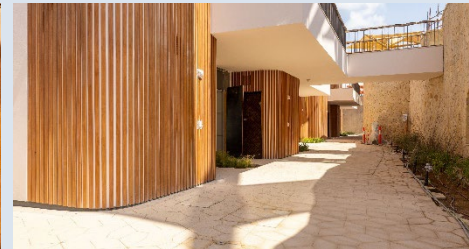
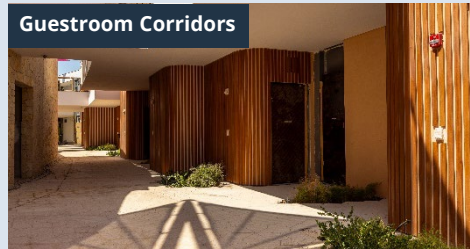
Marina Condos



First in Place Guestroom



Guestroom Corridors



Guestroom Interiors



Shura Island



INTERCONTINENTAL[®]
HOTELS & RESORTS



Intercontinental
Hotel & Resorts



Number of Keys 210 keys

Aerial View



Main Pool, All Day Dining, Pool Bar and Grill



Spa



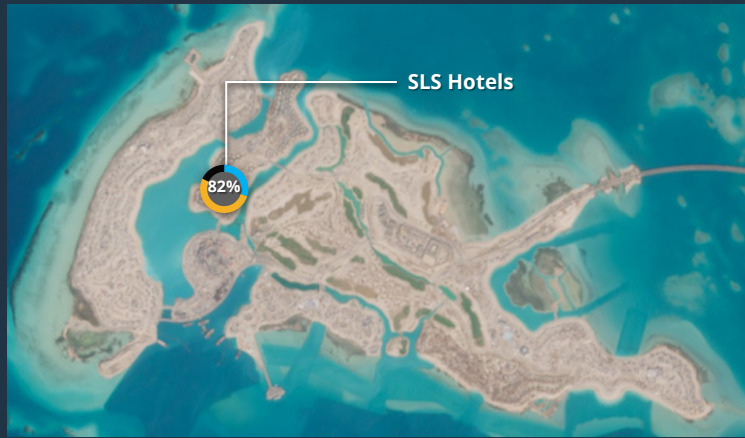
Specialty Restaurant



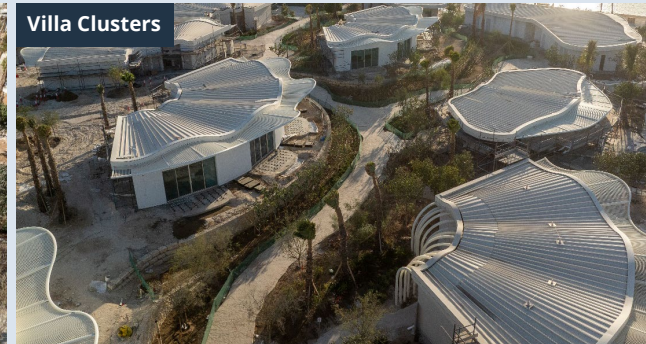
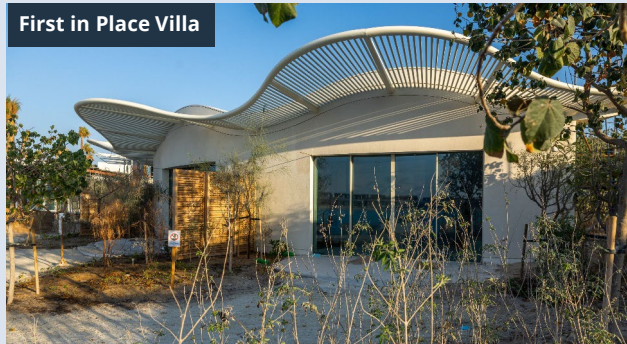
Guestroom Clusters



Shura Island



Number of Keys 150 keys

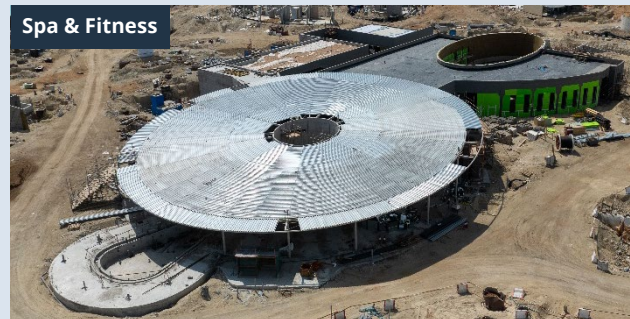


Shura Island

FAENA

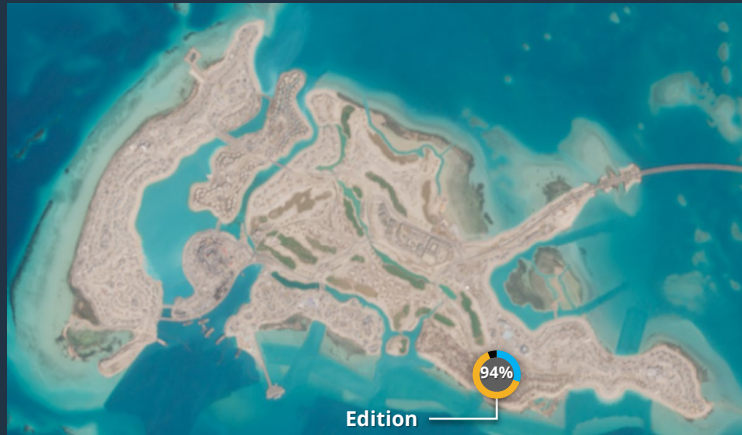


Number of Keys 150 keys



Shura Island

EDITION

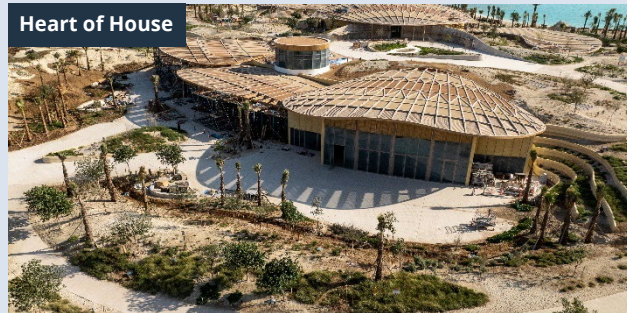


Number of Keys 240 keys

Aerial View



Heart of House



Meeting and Banqueting



Recreation Building and Pool



Guestroom Clusters



Guestrooms



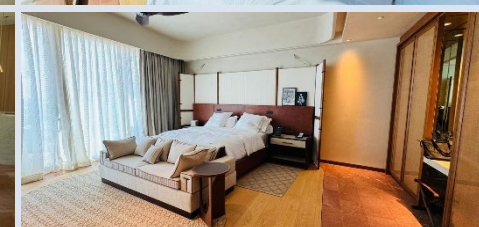
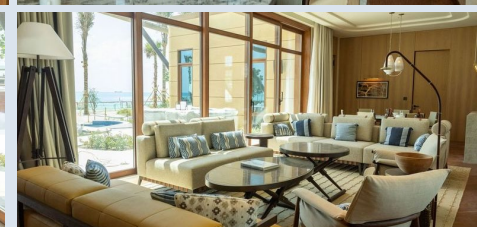
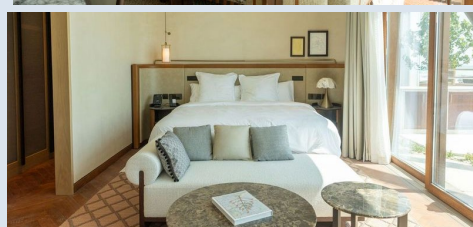
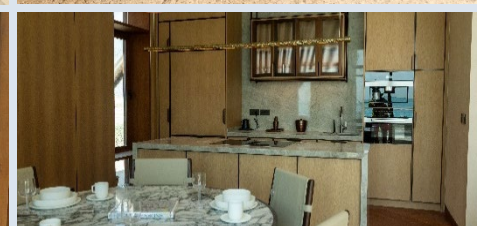
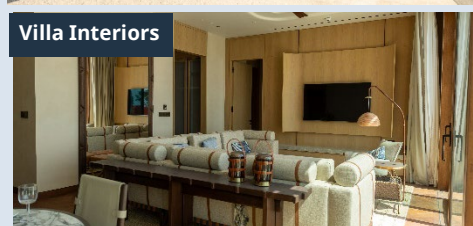
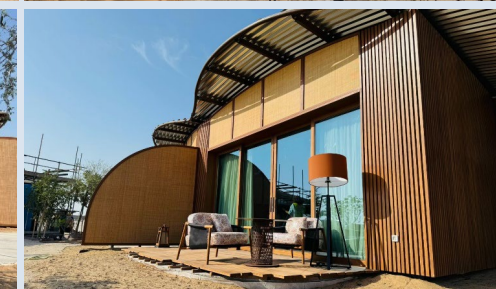
Shura Island



FOUR SEASONS



Number of Keys 180 keys



Shura Island

MIRAVAL



Number of Keys 180 keys

Aerial View



Arrival Hub



Spa



Fitness Center



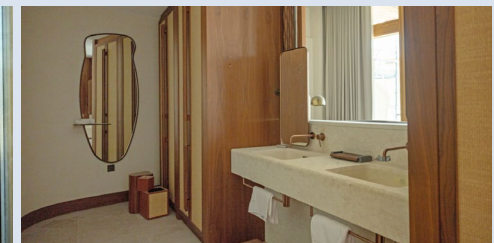
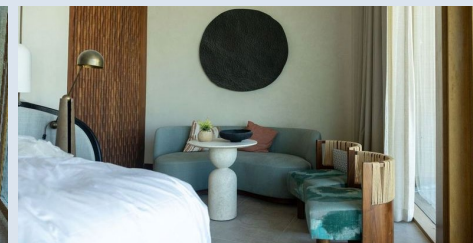
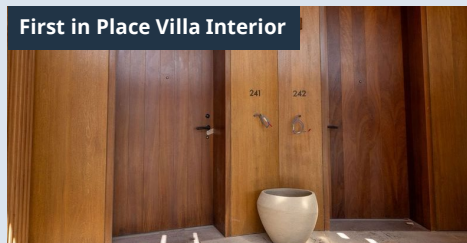
First in Place Villa



First in Place Guest Room



First in Place Villa Interior



Staff Village





AMAALA

AMAALA Summary

By 2030, AMAALA
Will Deliver Circa

3,900

HOTEL KEYS

1,170

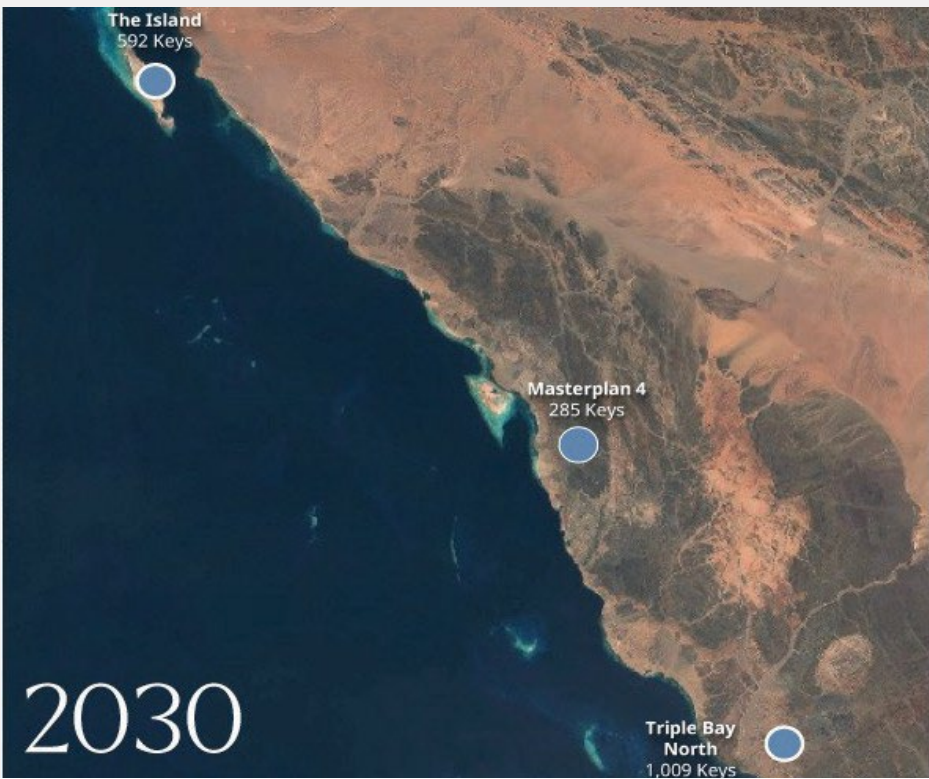
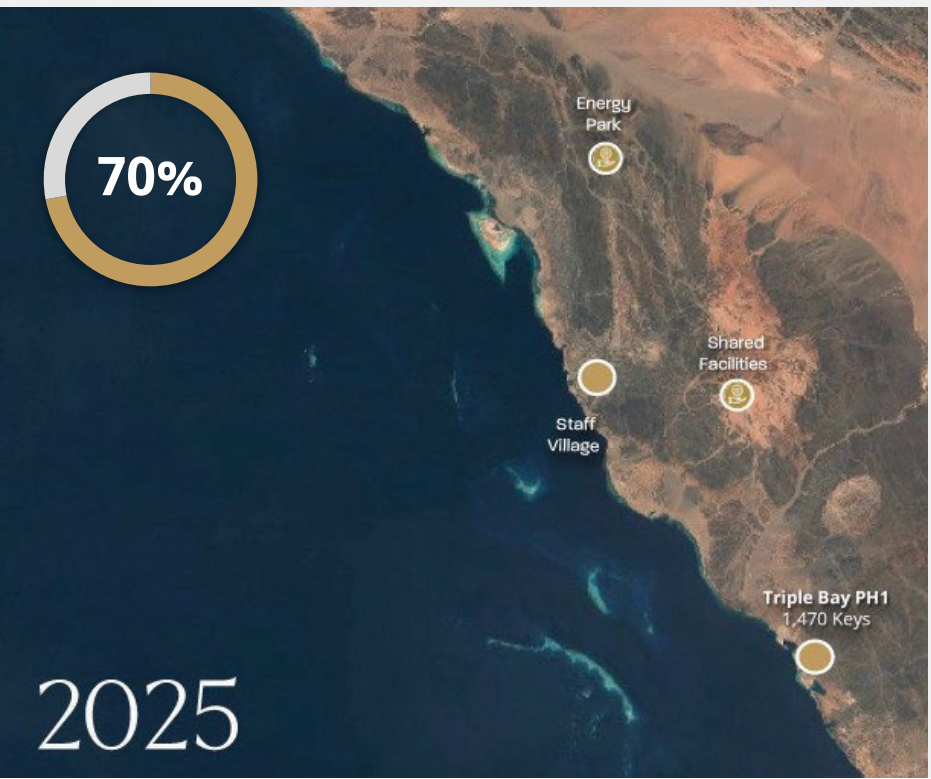
RESIDENTIAL UNITS

01

ISLAND

02

COASTAL
LOCATIONS



~160

RESIDENTIAL
UNITS

01

COASTAL SITE
& 1 STAFF VILLAGE

08

HOTELS

~1,470

KEYS

~350

RESIDENTIAL
UNITS

01

COASTAL SITE

12

HOTELS

~2,040

KEYS

815

RESIDENTIAL
UNITS

02

COASTAL SITES
& 1 STAFF VILLAGE

~29

HOTELS

~3,900

KEYS

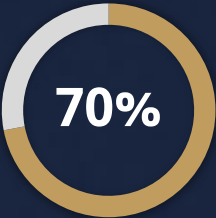
~1,170

RESIDENTIAL
UNITS

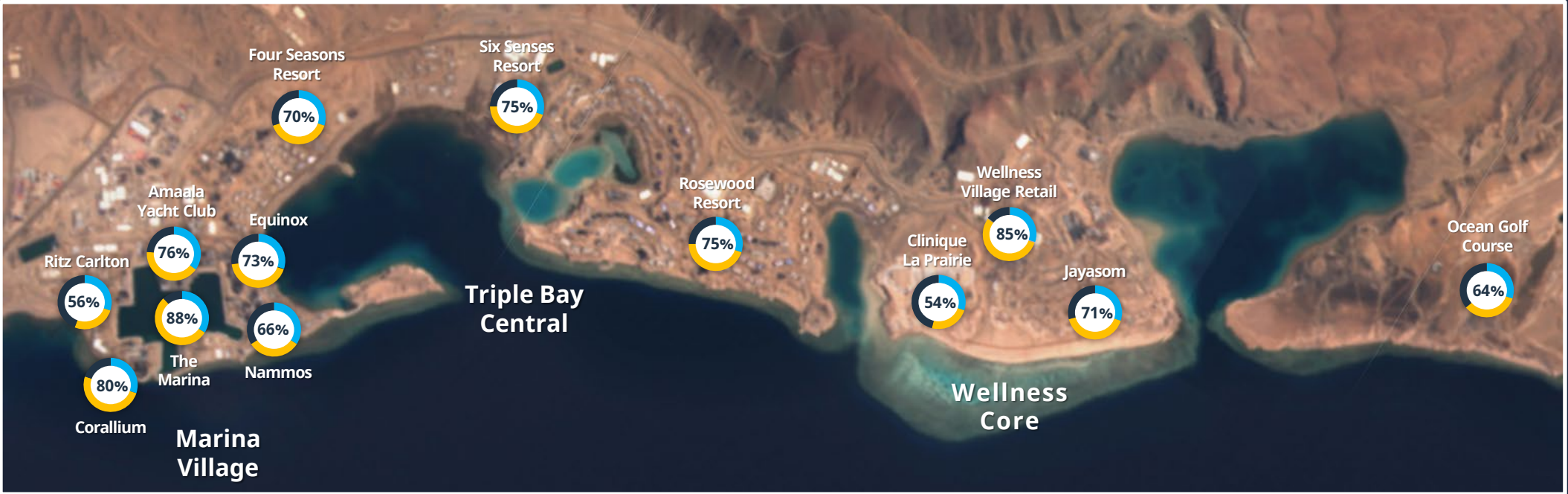
Progress of Amaala Phase 1 (as of February 2025)



Phase 1 Overall Completion



- Legend**
- Design + Progress¹
 - Construction Progress¹
 - Completed
 - % Overall Progress



¹ Overall progress is based on earned value. Includes Procurement



FOUR SEASONS

SIX SENSES

EQUINOX

THE RITZ-CARLTON

Yacht Club

ROSEWOOD
HOTELS & RESORTS

CLINIQUE
LA PRAIRIE

JAYASOM

Corallium

NAMMOS
HOTELS & RESORTS



The Ritz
Carlton

Royal AMAALA
Yacht Club

Equinox
Hotel

Nammos

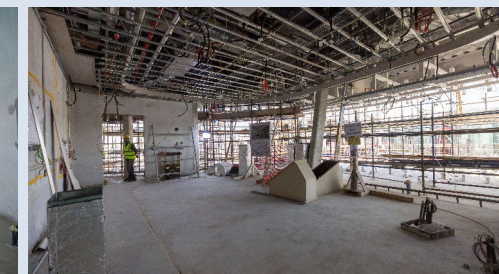
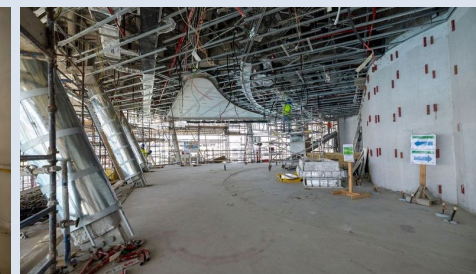
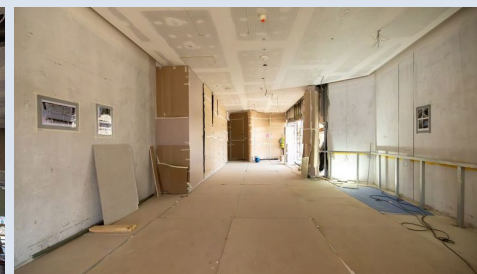
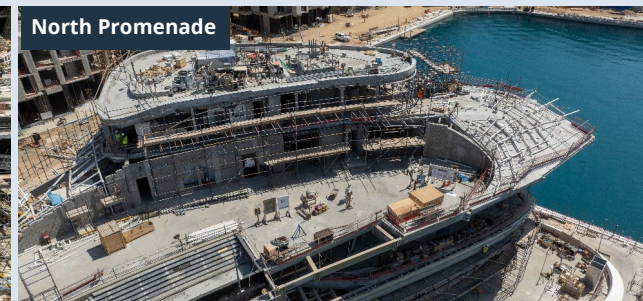
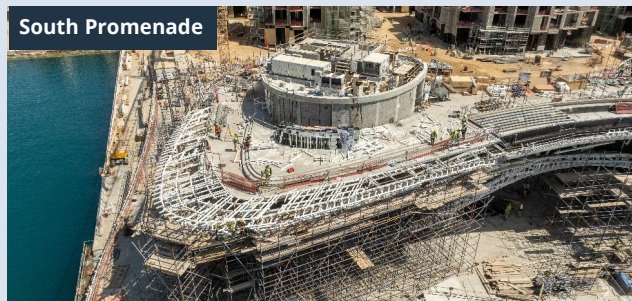
Corallium

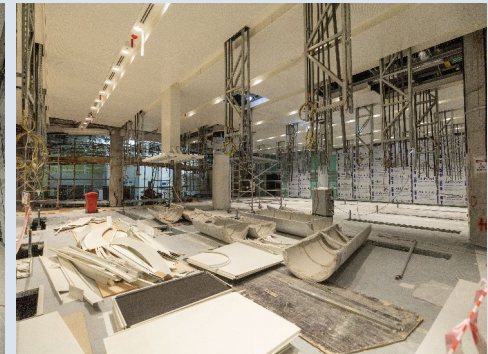
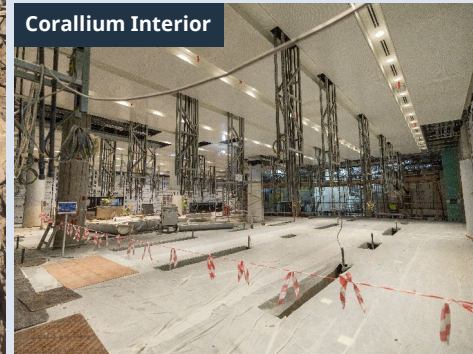
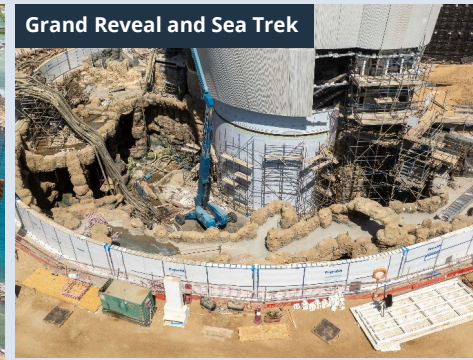
MARINA
VILLAGE

Marina Village The Marina



Marina Village
AMAALA Yacht Club





Marina Village



THE RITZ-CARLTON



Number of Keys 390 keys

Aerial View



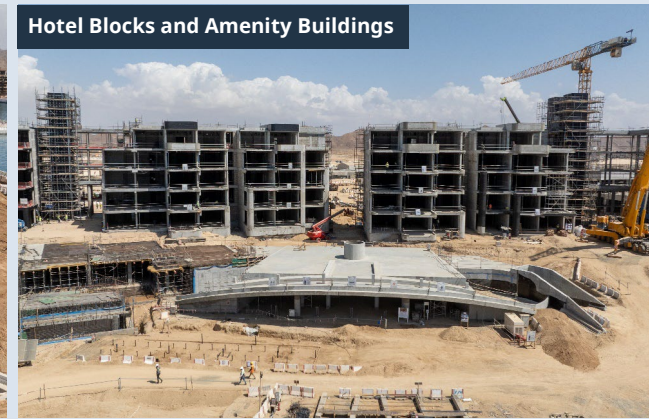
Arrival Lobby



Panoramic Restaurant



Hotel Blocks and Amenity Buildings



Hotel Blocks and Marina Front Blocks



Marina Village

EQUINOX

73%



Number of Keys

128 keys

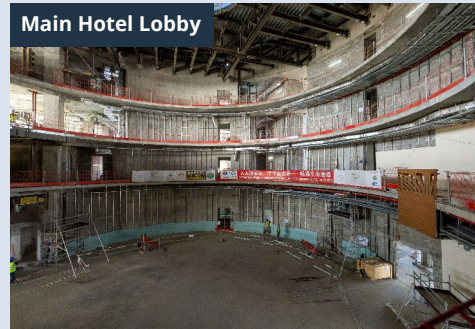
Aerial View



Main Hotel



Main Hotel Lobby



Main Hotel Guest Rooms



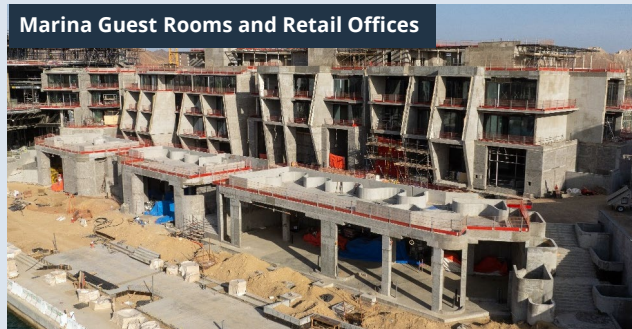
Main Hotel Guest Room Hall



Main Hotel Guest Room Interior



Marina Guest Rooms and Retail Offices



Marina Condo Clusters



Beach Club



Marina Village

NAMMOS

HOTELS & RESORTS



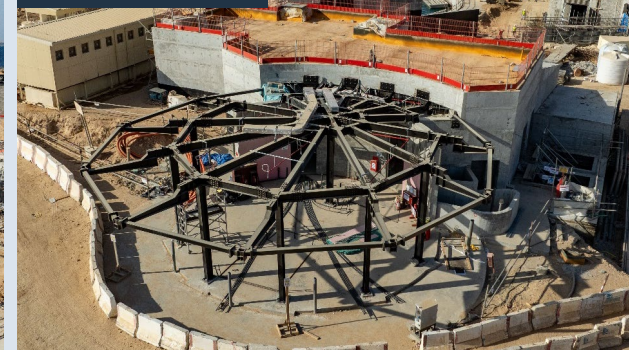
Number of Keys 130 keys



Hotel Guestroom Clusters



Specialty Restaurant



All Day Dining



Villa Cluster



Villa



Hijaz Island



Triple Bay Central



FOUR SEASONS



Number of Keys

228 keys

Aerial View



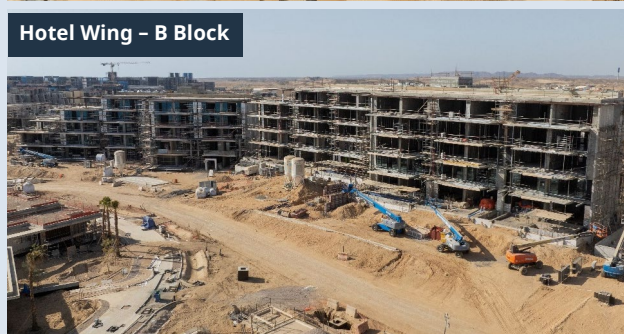
Hotel Arrival



Spa



Hotel Wing – B Block



Central Pool Area



Hotel Wing – C Block



Cascade Garden Villa Cluster



Water Garden Villa Cluster



Wellness Garden Villa Cluster



Branded Residence Villa



Branded Residence Villa

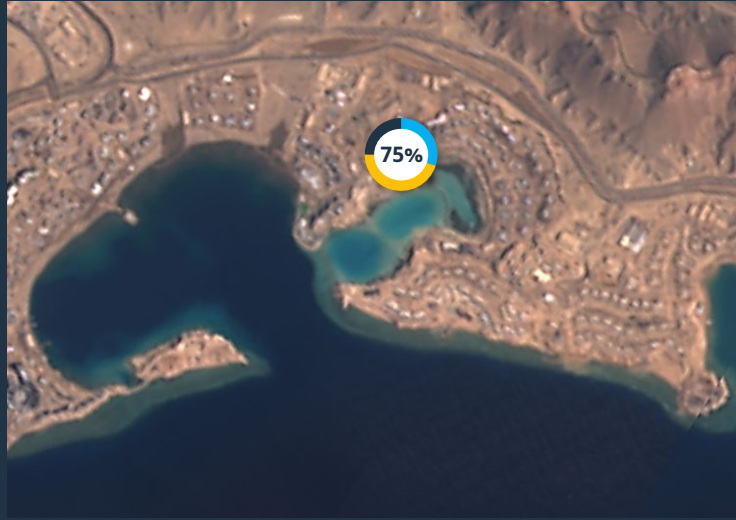




Triple Bay Central

SIX SENSES

75%



Number of Keys 125 keys



Aerial View



All Day Dining



Spa



North Village Pool



Guest Room Clusters



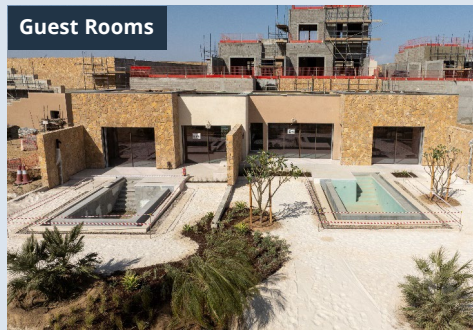
Guest Room Clusters



Branded Residences Clusters



Guest Rooms



Branded Residences



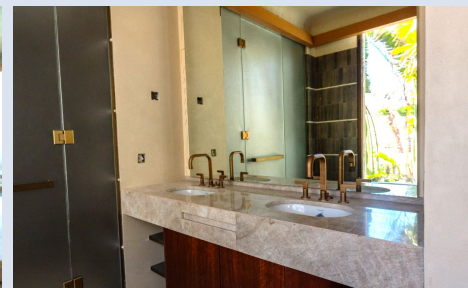
Triple Bay Central

ROSEWOOD

HOTELS & RESORTS



Number of Keys 136 keys



Wellness Core

CLINIQUE LA PRAIRIE



Number of Keys 88 keys

Aerial View



Beach Club



Courtyard



Medical Resort - North



Medical Resort - South



Branded Residences Cluster



Branded Residence



Wellness Core

JAYASOM

WELLNESS WISDOM



Number of Keys 177 keys

Aerial View



Wellness Spa



Family Hotel



Adult Hotel



Pavilion & Villa Clusters



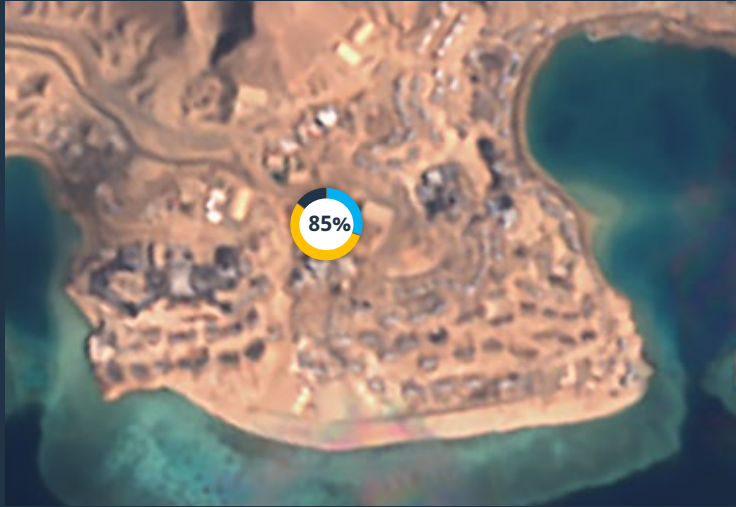
Pavilions



Villa



Wellness Core
Wellness
Village Retail



Entrance to Zero Waste Restaurant



Zero Waste Restaurant



Organic Learning Center



Pathway to Interactive Wellness Exhibition



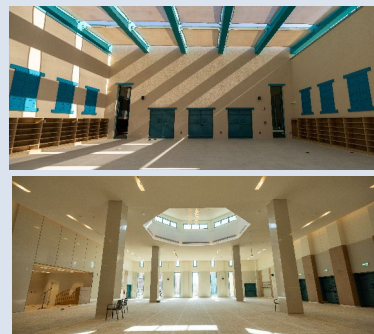
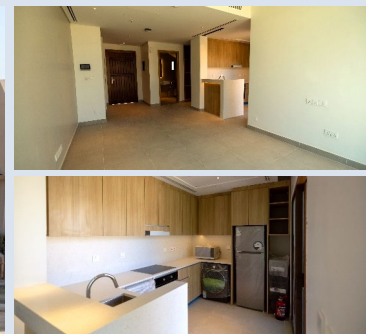
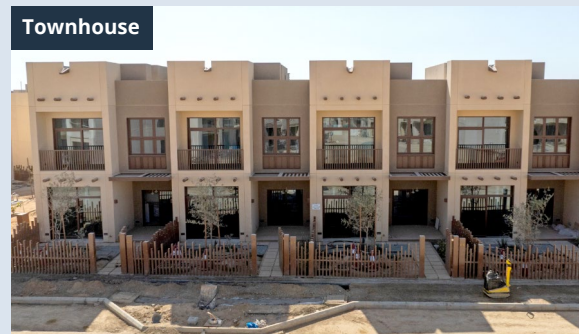
Interactive Wellness Exhibition



Resident Recreation Space



Staff Village (Phase 1)



Ocean Golf Course



Aerial View



Golf Course



Golf Course Lake



Laheq Island

Progress of Laheq Island (as of February 2025)





Arrival to Laheq



Beach front Villas



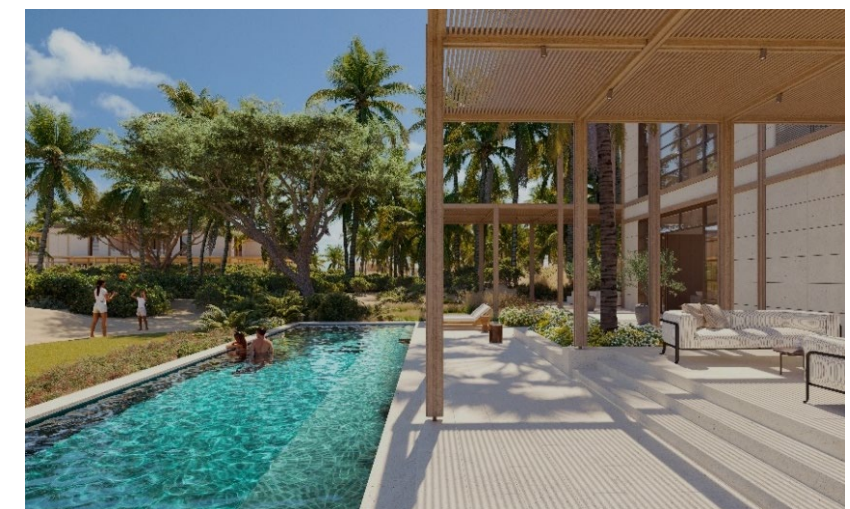
Souq



Marina



Laheq, South Community Villas





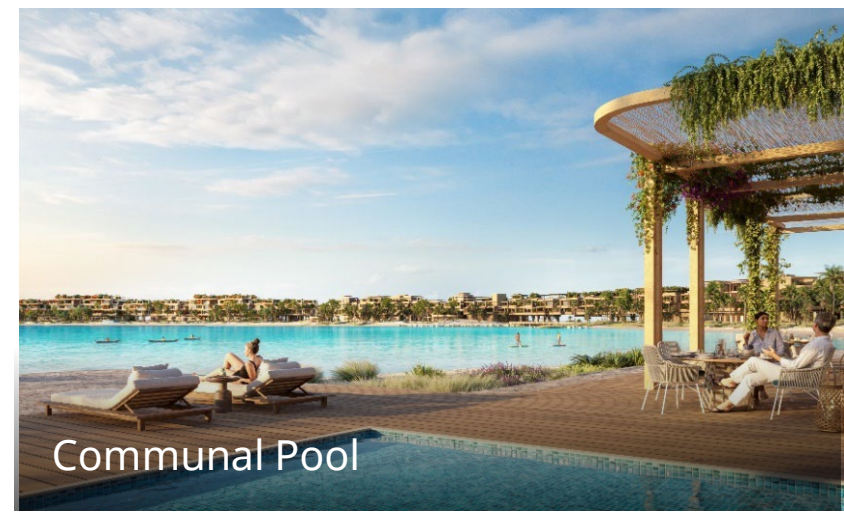
Ring Community Condos



Internal Lagoon



Souq



Communal Pool



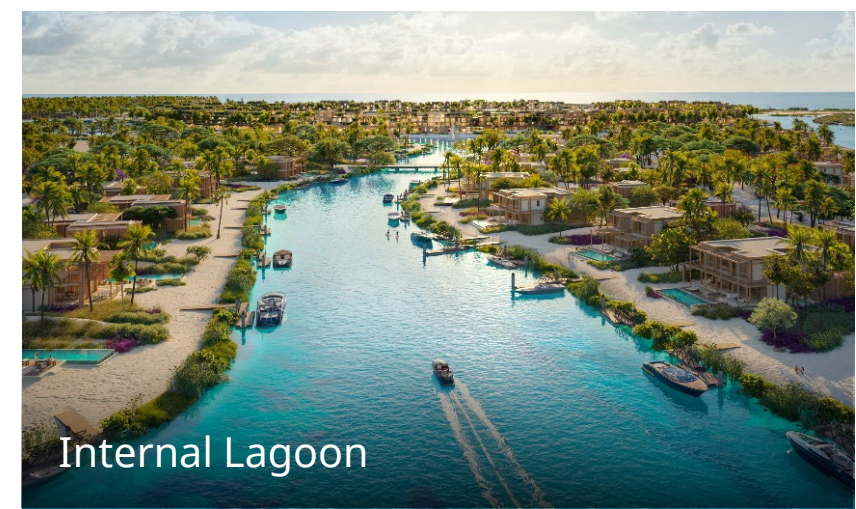
North Community Sports Pavilion



Golf Villas



Golf Course



Internal Lagoon

Laheq Island Hotels, Condo's & Souq



Aerial View



Marina Hotel



Souq



Wellness Hotel



Condos



Laheq Island
Residential Villas



Tourism Generation

430 Vocational Graduates hired in
fields where there is a scarcity of Saudi experts

TRACKS



Our Future
is in Safe Hands

Elite Graduate
Program



أكاديمية البحر الأحمر الوطنية
THE RED SEA NATIONAL ACADEMY

196K

Applied
Since inception

254

Hired since 2020

2000+

Total combined
applied students

130

Progressed to
management level

A Giga Project Supported by the Government

Chaired by H.R.H. Crown Prince Mohammad Bin Salman bin Abdulaziz Al Saud, the Board of Directors exemplifies the Saudi Government's support of Red Sea Global.



**H.R.H. Crown Prince
Mohammad bin Salman bin
Abdulaziz Al Saud**

Chairman

Crown Prince of the Kingdom of Saudi Arabia, Prime Minister, President of the Council for Economic and Development Affairs, Minister of Defense and Chairman of the Public Investment Fund



John Pagano
Group Chief Executive Officer



H.E. Yasir bin Othman Al-Rumayyan
Governor of the Public Investment Fund of Saudi Arabia



H.E. Majid bin Abdullah Al-Hogail
Minister of Municipal, Rural Affairs and Housing



H.E. Dr. Fahad bin Abdullah Toonsi
Secretary General of the Board



H.H. Prince Badr bin Abdullah bin Farhan Al-Saud
Minister of Culture



H.E. Dr. Majid bin Abdullah Al-Qassabi
Minister of Commerce



H.E. Eng. Abdulrahman Al-Fadley
Minister of Environment, Water and Agriculture



H.E. Ahmed Al-Khatib
Minister of Tourism

Master Developer – Red Sea Global

Red Sea Global, a closed joint stock company 100% owned by the Public Investment Fund (PIF), is a full-service real estate development company created to develop The Red Sea Coast.



Mr. John Pagano

Group Chief Executive Officer



Gregory Djerejian

Group Head of Investments and Group
Chief Legal Officer



Nicholas King

Group Chief Development Officer



Dr. Maryam Ali Ficociello

Group Chief Governance Officer



Tareq Musmali

Group Chief Internal Audit



Martin Greenslade

Group Chief Financial Officer



Ahmad G. Darwish

Group Chief Administrative Officer



Raed Albasseet

Group Chief Environment and
Sustainability Officer



#visitredsea
visitredsea.com